

BELLEX Ltd.

12-14 Finch Road
Douglas IM99 1TT - Isle of Man

LISA III



Builder :	Cantiere Nautico Arno	Type:	Leopard 112'
LOA :	34.00 m	Beam :	7.35m
Draft :	1.40 m	Year :	2006
Engines:	3 x MTU 16v2000M93	Speed:	38/45 knots
Accomm:	9 guests sleeping in 4 cabins		
Crew:	5		

Contact: Fredy Link – Tel. +34 971 19 34 84 / +34 670 33 20 55 // +41 71 244 14 00 /+ 41 79 600 2200 //
email: info@fredy-link.com

General Specifications

Builder:	Cantiere Nautico Arno
Type:	LEOPARD 34m
Length:	34 m
Beam:	7,35 m
Draft:	1,40 m
Year Built:	2006
Interior Designer:	Cantiere Nautico Arno
Hull Construction:	GRP
Hull Configuration:	Planning hull
Engines:	3X MTU 16V2000M93 Series (Water Jet Propulsion)
Generators:	2 x Kohler 40 Kw
Fuel consumption:	1200 L/H at cruising speed
Cruising speed:	38 knots
Max Speed:	45 knots

Accommodation

Number of Cabins:	4
Total Guests (Sleeping):	9
Total Guests (Cruising):	12
Cabin Configuration:	1 Master cabin, 1 VIP cabin, 1 double cabin & 1 twin cabin with pullman

BELLEX Ltd.

12-14 Finch Road
Douglas IM99 1TT - Isle of Man

Equipment

- Sony plasma TV in main saloon, TV room, Master & VIP cabins
- DVD player in all cabins
- IPOD docking station in saloon, TV room and foredeck sun pad
- Full WIFI throughout
- Panasonic phone system for internal and external communications
- High speed online broadband through any port or SFR 3G
- Wireless printer, fax & scanner
- Fleet 55 for satellite phone and fax communications

Tenders and toys

- 3,5m Novurania tender with 60 HP outboard engine.
- Seabob professional for scuba diving.
- Water ski,
- Diving equipment.
- Banana for 3 persons
- Donut

Charter prices:

Daily charter from 10:00 am until 20:00 pm per day **€ 10'000.--**
excl. food, alcoholic beverages and fuel
€ 2'500.- daily (prepay with clearance at end of day)

Weekly charter 7 days incl. overnight stay per week **€ 80'000.--**
excl. food, alcoholic beverages and fuel. Additional account
€ 2500.- daily. (prepay with summaries made end of charter)

Contact: Fredy Link – Tel. +34 971 19 34 84 / +34 670 33 20 55 // +41 71 244 14 00 /+ 41 79 600 2200 //
email: info@fredy-link.com

BELLEX Ltd.

12-14 Finch Road
Douglas IM99 1TT - Isle of Man



Contact: Fredy Link – Tel. +34 971 19 34 84 / +34 670 33 20 55 // +41 71 244 14 00 /+ 41 79 600 2200 //
email: info@fredy-link.com

BELLEX Ltd.

12-14 Finch Road
Douglas IM99 1TT - Isle of Man



Sun deck / swimm platform



outside dining



TV salon



stern view / entrance



salon / dining with bar

Contact: Fredy Link – Tel. +34 971 19 34 84 / +34 670 33 20 55 // +41 71 244 14 00 /+ 41 79 600 2200 //
email: info@fredy-link.com

BELLEX Ltd.

12-14 Finch Road
Douglas IM99 1TT - Isle of Man



VIP cabin



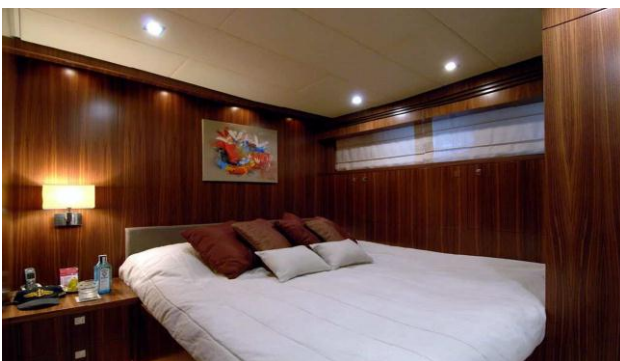
bathroom



owner cabin



guest room /with pullman



guest room

